



View of block



£210,000

Offered to the market with no upper chain this 2 bedroom property benefits from a share of the freehold along with a garage. The accommodation comprises 2 bedrooms, lounge, bathroom and kitchen.

Property Description

Entrance

Double glazed front door with entry phone system to communal entrance hall, stairs to the first floor flat.

Entrance Hall

Hardwood front door to entrance hall, door to airing cupboard, entry phone system.

Lounge

A dual aspect room with double glazed window to the side and full height double glazed window to the rear, radiator, TV point, thermostat control.

Kitchen

Fitted with a range of base and eye level storage units, work surface areas with inset single drainer stainless steel sink unit with mixer tap set below double glazed window to the rear, built in electric hob with electric oven below, plumbing and space for washing machine, tiled surrounds, wall mounted gas boiler serving central heating and hot water, cupboard housing meters.

Bedroom One

Double glazed window to the front, radiator.

Bedroom Two

Double glazed window to the front, radiator.

Bathroom

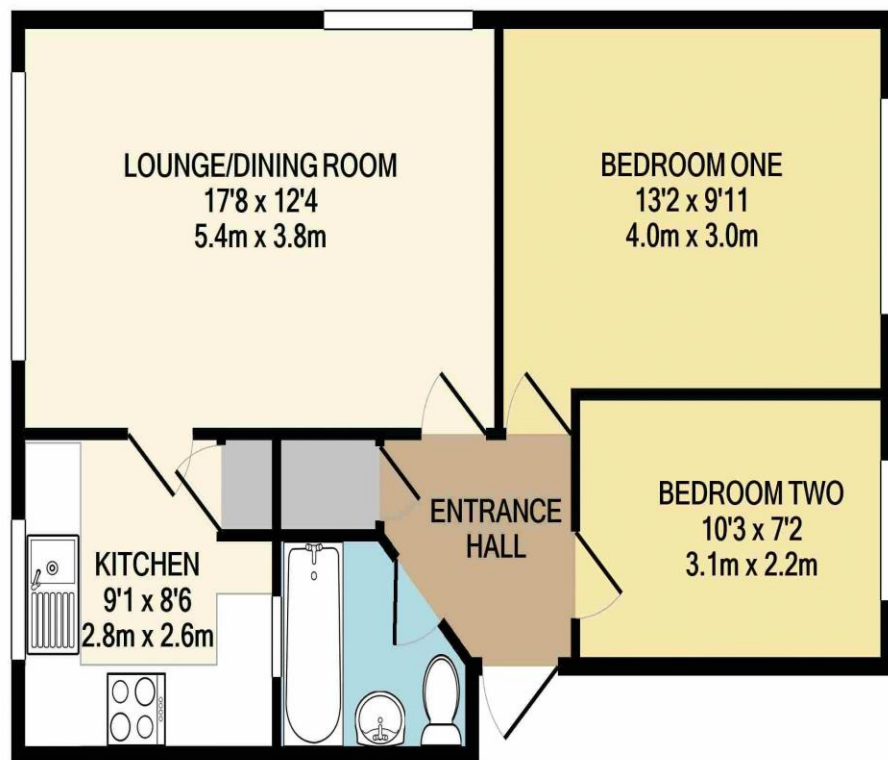
A three piece suite comprising low level WC, wash hand basin, panel bath with electric shower over, tiled surrounds, extractor fan, radiator.

Outside

Communal gardens, with outside bin storage area.

Garage

In a block to the rear.



TOTAL APPROX. FLOOR AREA 568 SQ.FT. (52.8 SQ.M.)

Whilst every attempt has been made to ensure the accuracy of the floor plan contained here, measurements of doors, windows, rooms and any other items are approximate and no responsibility is taken for any error, omission, or mis-statement. This plan is for illustrative purposes only and should be used as such by any prospective purchaser. The services, systems and appliances shown have not been tested and no guarantee as to their operability or efficiency can be given

Made with Metropix ©2021

MONEY LAUNDERING REGULATIONS 2017 intending purchasers will be asked to produce identification and proof of financial status when an offer is received. We would ask for your co-operation in order that there will be no delay in agreeing the sale.

THE CONSUMER PROTECTION REGULATIONS 2008 The Agent has not tested any apparatus, equipment, fixtures and fittings or services and so cannot verify that they are in working order or fit for the purpose. A Buyer is advised to obtain verification from their Solicitor or Surveyor. References to the Tenure of a Property are based on information supplied by the Seller. The Agent has not had sight of the title documents. A Buyer is advised to check the availability of this property before travelling any distance to view. We have taken every precaution to ensure that these details are accurate and not misleading. If there is any point which is of particular importance to you, please contact us and we will provide any information you require. This is advisable, particularly if you intend to travel some distance to view the property. The mention of any appliances and services within these details does not imply that they are in full and efficient working order. These particulars are in draft form awaiting Vendors confirmation of their accuracy. These details must therefore be taken as a guide only and approved details should be requested from the agents

